

AT2000/AT2200 CANISTER REMAPPING

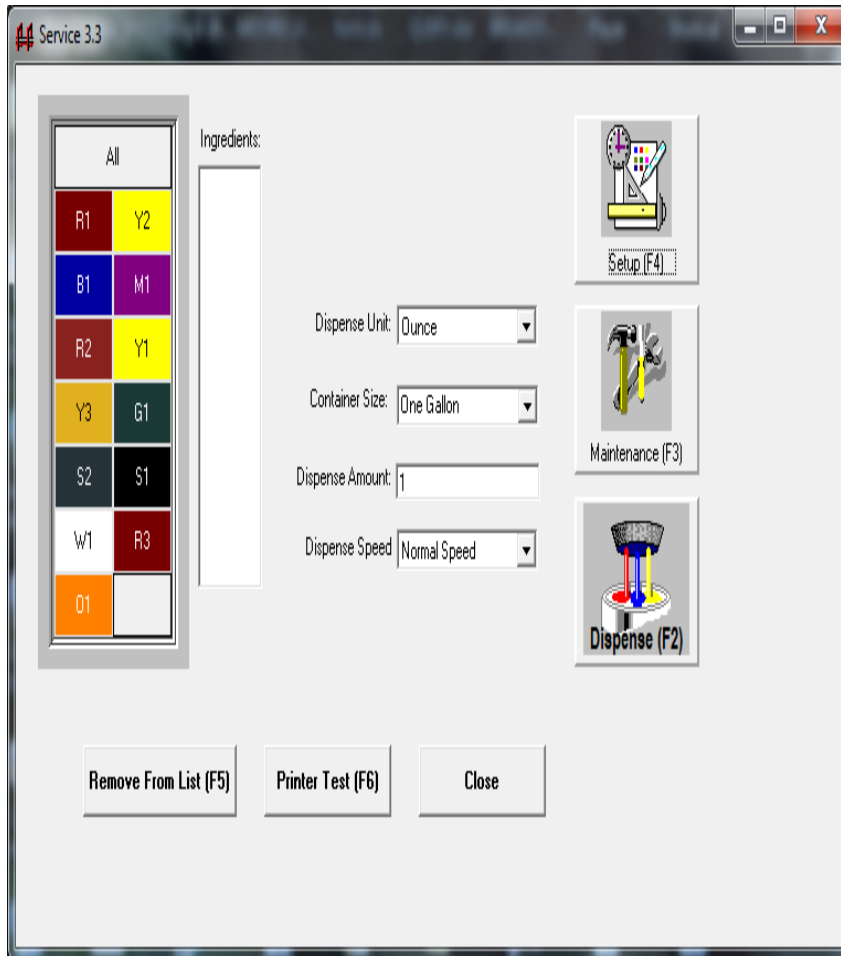


Property of Fluid Management



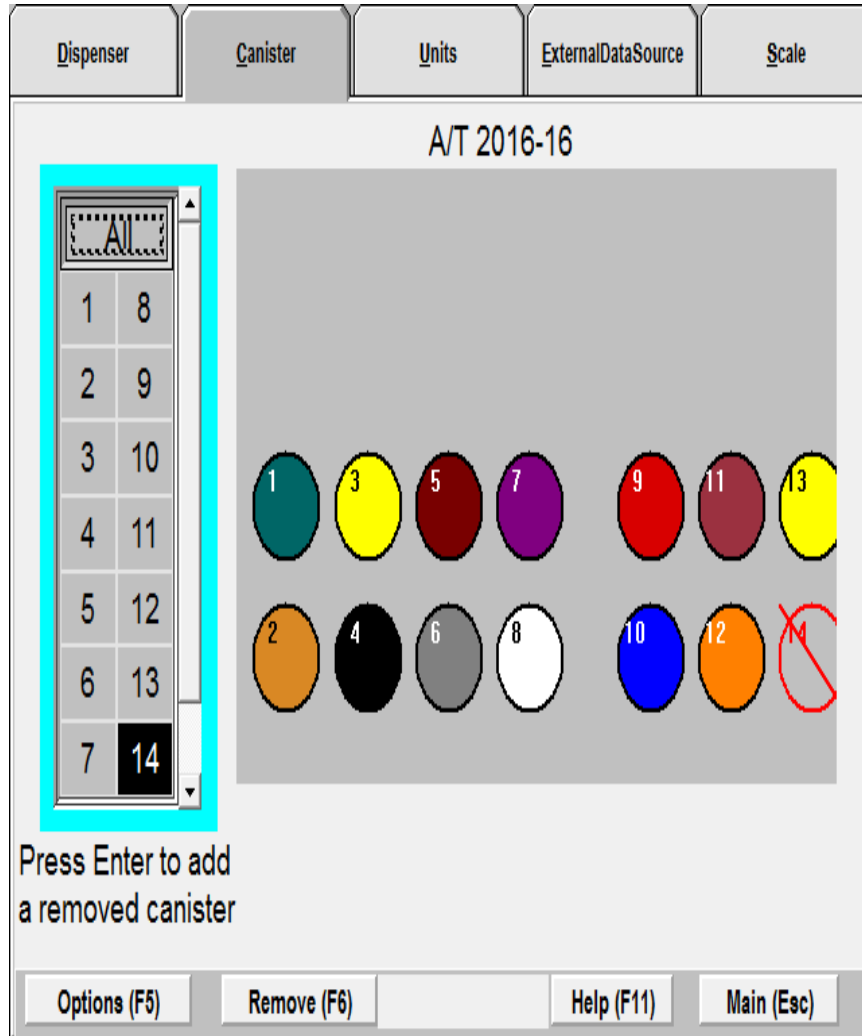
Fluid Management®

STEP 1



- Close the Benjamin Moore Colorx program.
- Double click on service.exe shortcut on your desktop
- Password is “service”
- Click on Setup (F4) icon

STEP 2



- Click on the canister tab.
- Click on the spare to activate and click enter on your keyboard. It will run a pulse test.
- The canister is now active
- Click on options (F5)

STEP 3

Ingredients Fluid Properties Levels Settings

S2 Canister #6

Type Canister

Ingredient Name S2

Choose RGB (F2) R G B 128 128 128

Choose Text Color (F3) R G B 255 255 255

Set All G1 W1 Y3 R2 Y2 B1 S1 R1 R3 O1 S2 Y1 M1

OK Cancel Apply Help (F11)

- Click on the color that is not dispensing
- Rename it “spare” were it says ingredient name.
- For example: if “S2” is the colorant not dispensing. Click on “S2” and rename that position “Spare”
- (NOTE what canister # was the original “S2”
- Apply and ok at the bottom and save changes.

STEP 4

Ingredients Fluid Properties Levels Settings

Spare Canister #14

Set All

G1 W1

Y3 R2

Y2 B1

S1 R1

R3 O1

S2 Y1

M1 Spare

Type Canister

Ingredient Name Spare

Choose RGB (F2) R G B 192 192 192

Choose Text Color (F3) R G B 0 0 0

OK Cancel Apply Help (F11)

- Click on the spare position just activated.
- Rename it were it says ingredient name.
- For example: if “S2” is the colorant needed to move to the spare position name it “S2”
- Apply and ok at the bottom and save changes.
- Exit service.exe

STEP 5

Dispenser Canister Units ExternalDataSource Scale


Installation Name:
DVX

Current Configuration:
A/T 2016-16

Dipswitch Address: (press enter)
2

Download (F9)

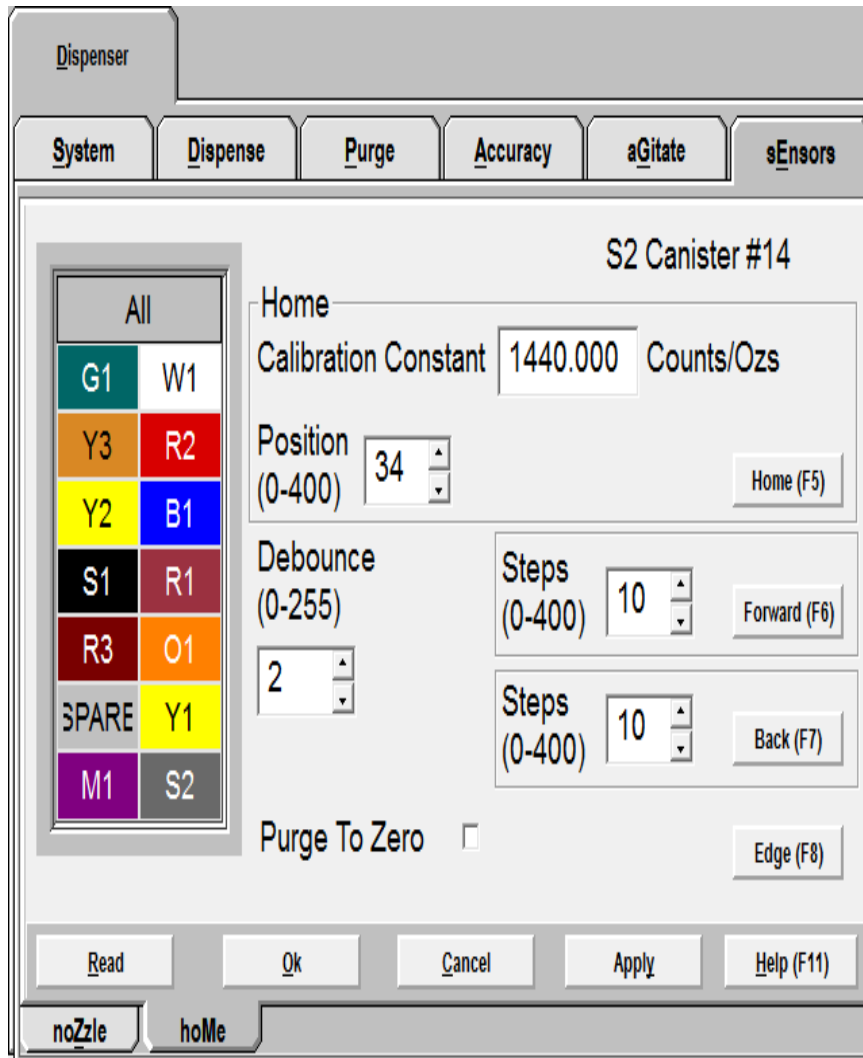
Set Parmns (F8)



Options (F5) Reset (F6) Help (F11) Main (Esc)

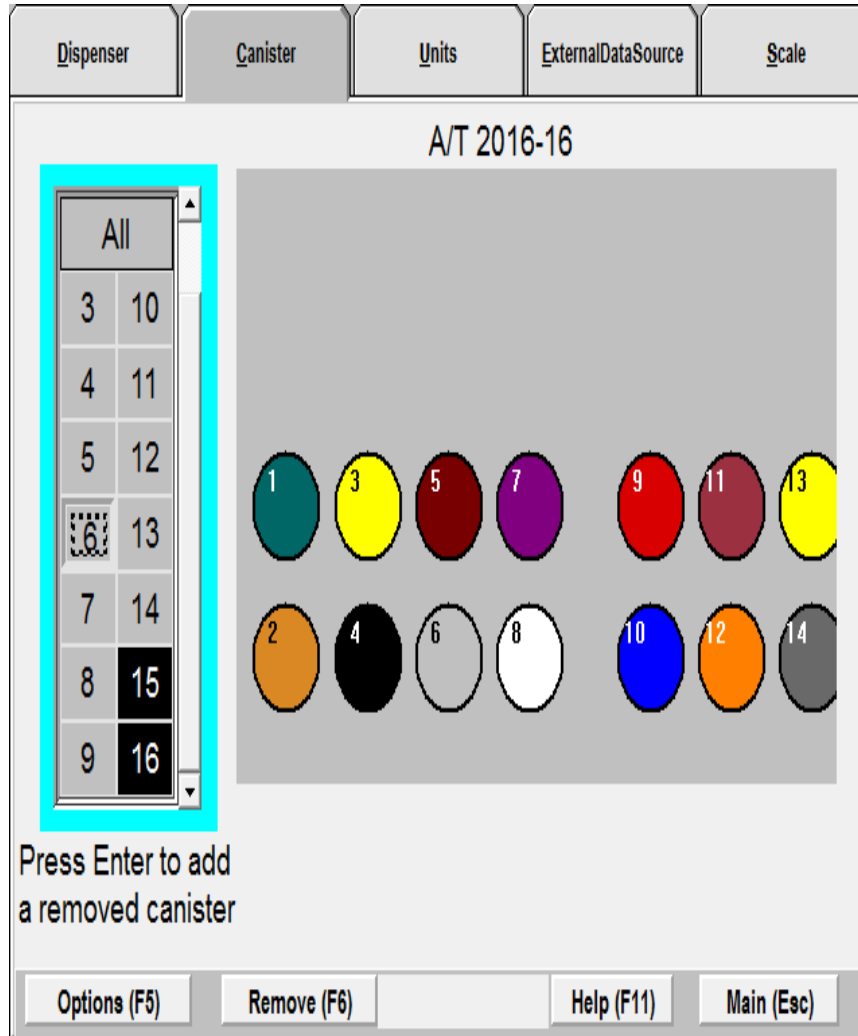
- Reopen service.exe shortcut.
- Click on Setup (F4)
- Click on Dispenser tab
- Click on options (F5)

STEP 6



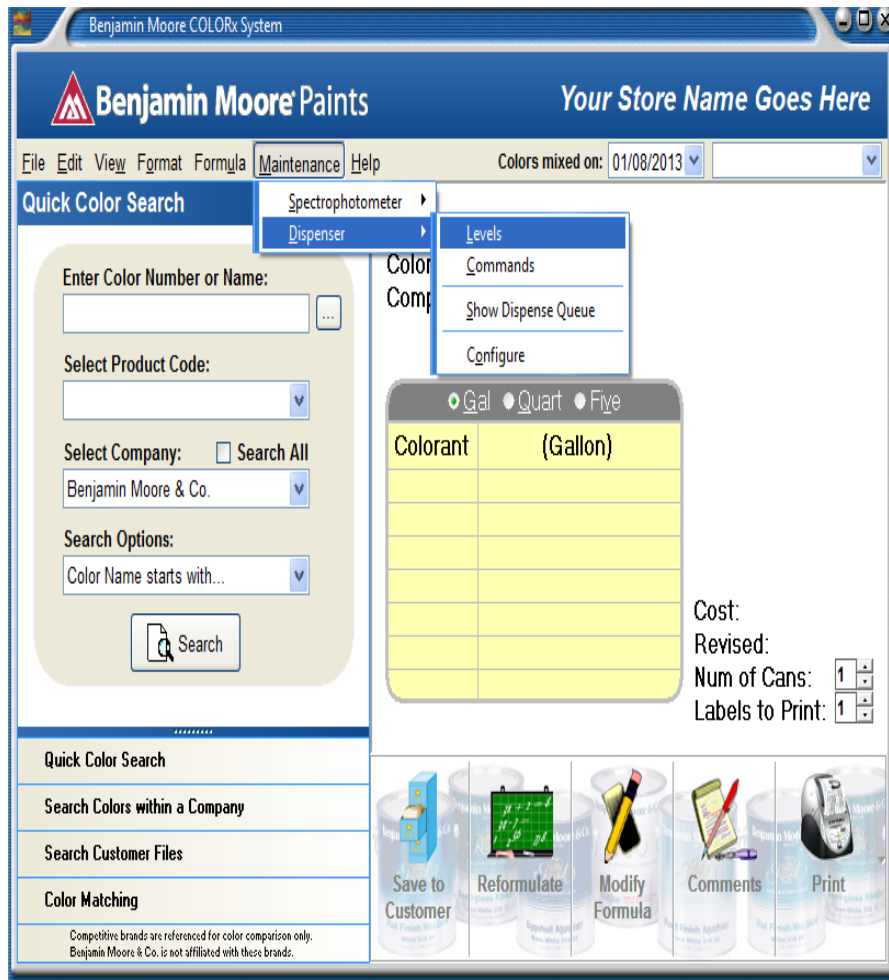
- Click on the sensors tab
- Click on the spare position that used to be the colorant that failed and write down the calibration constant
- Then click on the just activated colorant
- For example we are remapping “S2”
- Type in the calibration constant you wrote down from the spare to “S2”
- Apply and ok
- Click yes to save changes
- It will run pulse test
- Exit to main menu of service.exe

STEP 7



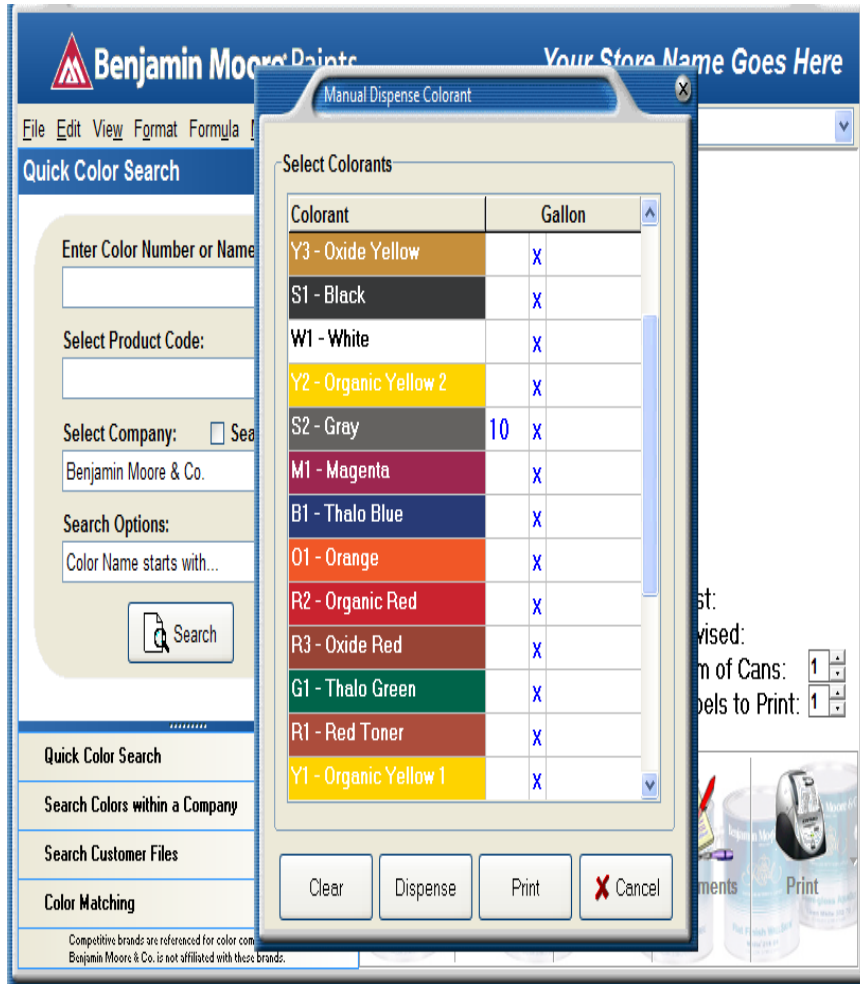
- Click on Setup (F4)
- Click on the Canister tab
- Click on the number to the left which is now the spare
- For example we renamed the original “S2” to spare which was canister#6 click on box #6
- Click on Remove (F6)
- It will run a pulse test
- Exit service.exe

STEP 8



- Reopen Benjamin Moore Colorx
- Click on maintenance
- Click on dispenser
- Click on levels and add colorant for the canister.
- For example we remapped “S2” fill the new canister with “S2” colorant

STEP 9



- Click on Formula
- Click on Manual Dispense Colorants
- Select the colorant just remapped
- For example: “S2” was the colorant remapped
- Dispense 10 oz. the large dispense is required to fill the tubing with colorant and prevent from having any air in that line.

STEP 10



- If you can find 1.5 ounce shot glasses, it will allow you to check your calibration .
- Put one shot glass on top of the other and dispense 1 oz. of the colorant.
- For example: “S2” the colorant remapped.
- Volume wise the colorant needs to sit flush with the bottom lip of the shot glass. Example: picture to the left.
- If the dispense is not flush with the bottom lip of the bottom shot glass please call 800-462-2466 option 4 technical support. We can assist in adjusting your slope.