

AT7000/AT7000R CANISTER REMAPPING

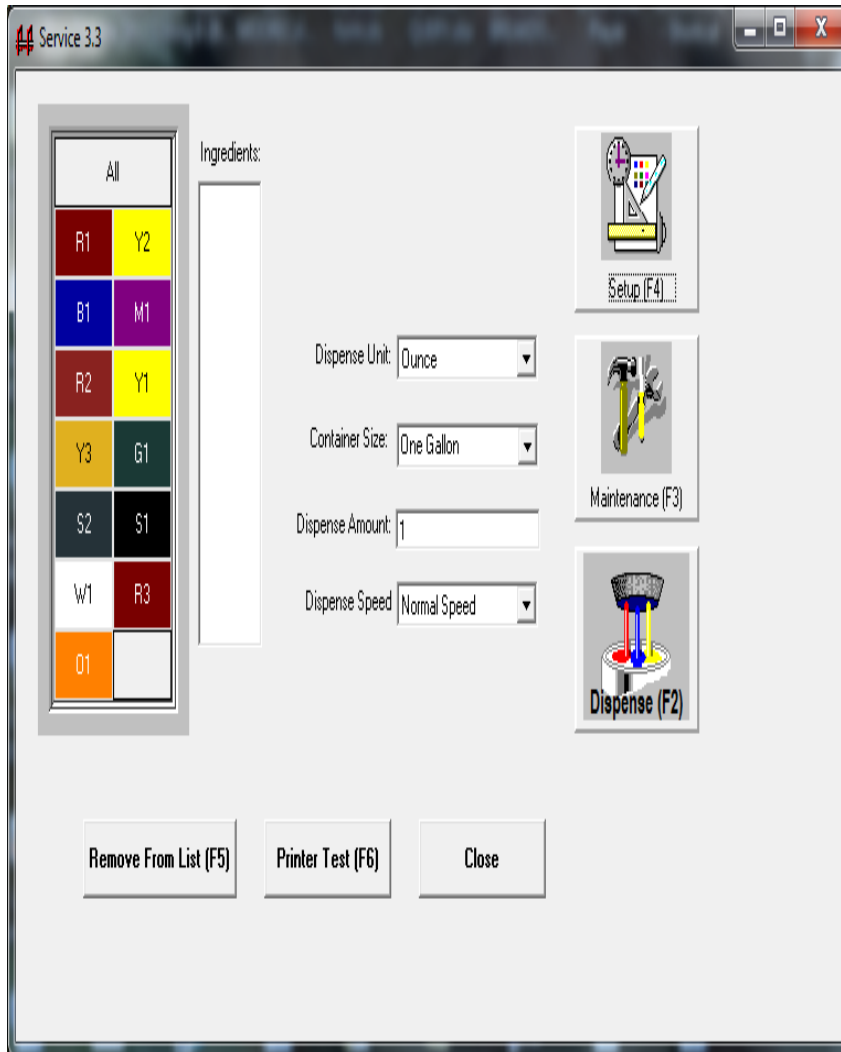


Property of Fluid Management



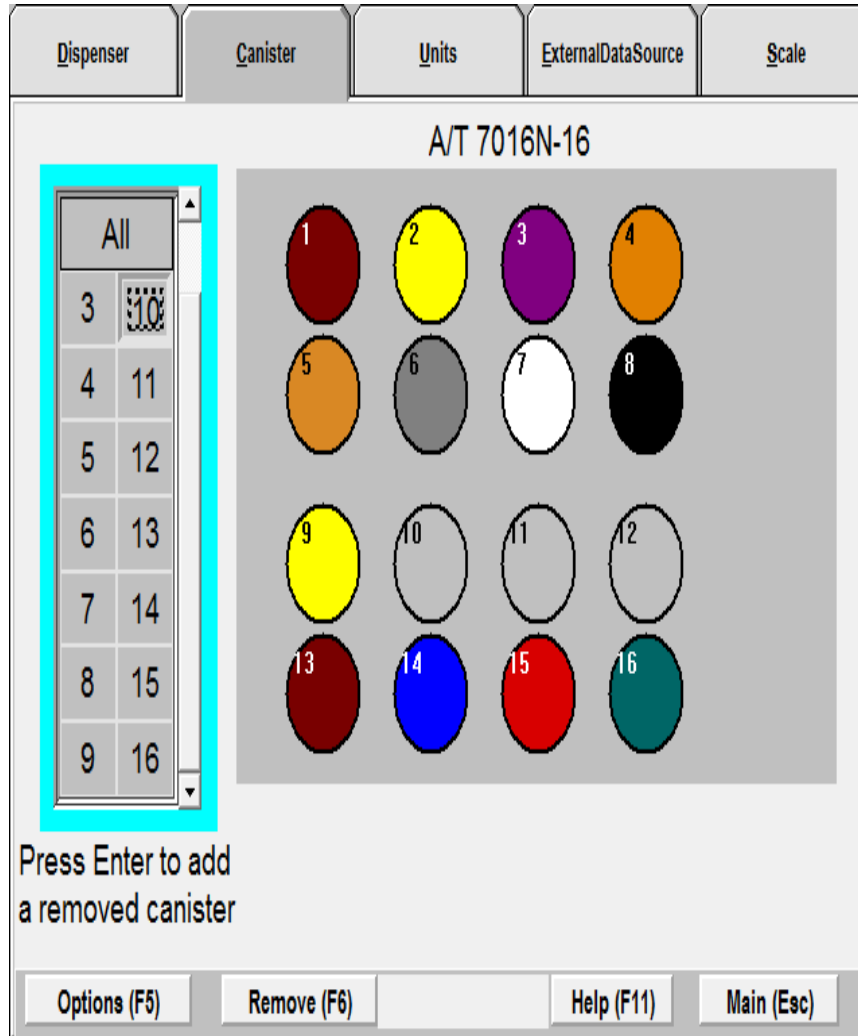
Fluid Management®

STEP 1



- Close the Benjamin Moore Colorx program.
- Double click on service.exe shortcut on your desktop
- Password is “service”
- Click on Setup (F4) icon

STEP 2



- Click on the canister tab.
- Click on the spare to activate and click enter on your keyboard. It will run a pulse test.
- The canister is now active
- Click on options (F5)

STEP 3

The screenshot shows the 'Ingredients' tab in the Fluid Management software. The main window is titled 'S2 Canister #6'. On the left, there is a color palette with a cyan border. The 'S2' color is highlighted. The main area contains the following fields:

- Type: Canister
- Ingredient Name: S2
- Choose RGB (F2): R=128, G=128, B=128
- Choose Text Color (F3): R=0, G=0, B=0

At the bottom, there are buttons for 'OK', 'Cancel', 'Apply', and 'Help (F11)'. A 3D model of a canister is shown on the right side of the interface.

- Click on the color that is not dispensing
- Rename it “spare” were it says ingredient name.
- For example: if “S2” is the colorant not dispensing. Click on “S2” and rename that position “Spare”
- (NOTE what canister # was the original “S2”
- Apply and ok at the bottom and save changes.

STEP 4

Spare Canister #10

Type: Canister

Ingredient Name: Spare

Choose RGB (F2): R 192 G 192 B 192

Choose Text Color (F3): R 0 G 0 B 0

OK Cancel Apply Help (F11)

- Click on the spare position just activated.
- Rename it were it says ingredient name.
- For example: if “S2” is the colorant needed to move to the spare position name it “S2”
- Apply and ok at the bottom and save changes.
- Exit service.exe

STEP 5

Dispenser Canister Units ExternalDataSource Scale


Installation Name:
DVX

Current Configuration:
A/T 7016N-16

Dipswitch Address: (press enter)
2

Download (F9)

Set Parmns (F8)



Options (F5) Reset (F6) Help (F11) Main (Esc)

- Reopen service.exe shortcut.
- Click on Setup (F4)
- Click on Dispenser tab
- Click on options (F5)

STEP 6

Dispenser

System Dispense Purge Accuracy aGitate **Sensors**

SPARE Canister #6

Home

Calibration Constant 912.0000 Counts/Ozs

Position (0-400) 13 Home (F5)

Debounce (0-255) 2

Steps (0-400) 10 Forward (F6)

Steps (0-400) 10 Back (F7)

Purge To Zero Edge (F8)

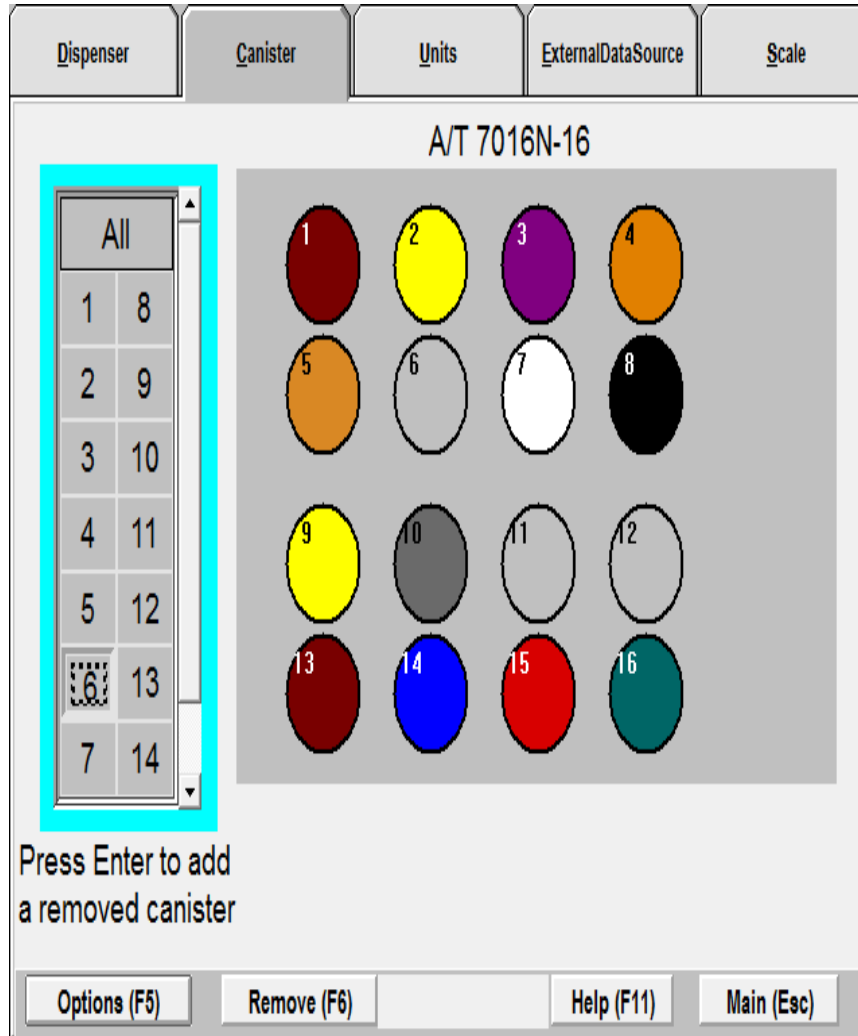
Read Ok Cancel Apply Help (F11)

noZzle hoMe

| | |
|-------|-------|
| All | |
| R3 | Y1 |
| Y2 | S2 |
| M1 | Spare |
| O1 | Spare |
| Y3 | R1 |
| SPARE | B1 |
| W1 | R2 |
| S1 | G1 |

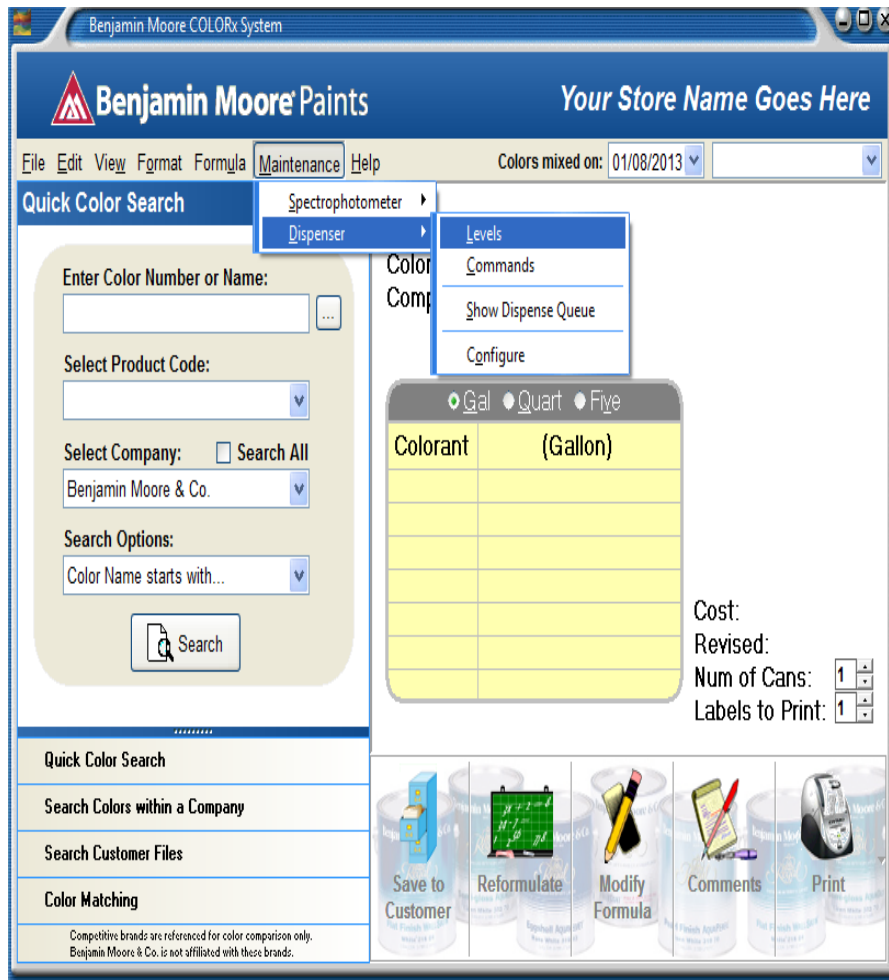
- Click on the sensors tab
- Click on the spare position that used to be the colorant that failed and write down the calibration constant
- Then click on the just activated colorant
- For example we are remapping “S2”
- Type in the calibration constant you wrote down from the spare to “S2”
- Apply and ok
- Click yes to save changes
- It will run pulse test
- Exit to main menu of service.exe

STEP 7



- Click on Setup (F4)
- Click on the Canister tab
- Click on the number to the left which is now the spare
- For example we renamed the original “S2” to spare which was canister#6 click on box #6
- Click on Remove (F6)
- It will run a pulse test
- Exit service.exe

STEP 8



- Reopen Benjamin Moore Colorx
- Click on maintenance
- Click on dispenser
- Click on levels and add colorant for the canister.
- For example we remapped “S2” fill the new canister with colorant

STEP 9



- Click on Formula
- Click on Manual Dispense Colorants
- Select the colorant just remapped
- For example: “S2” was the colorant remapped
- Dispense 10 oz. the large dispense is required to fill the tubing with colorant and prevent from having any air in that line.

STEP 10



- If you can find 1.5 ounce shot glasses, it will allow you to check your calibration .
- Put one shot glass on top of the other and dispense 1 oz. of the colorant.
- For example: “S2” the colorant remapped.
- Volume wise the colorant needs to sit flush with the bottom lip of the shot glass. Example: picture to the left.
- If the dispense is not flush with the bottom lip of the bottom shot glass please call 800-462-2466 option 4 technical support. We can assist in adjusting your slope.