



Fluid Management®

A Unit of IDEX Corporation

TECH0297: Installing Fast and Fluid Management IDD and Machine Configs for TintMaster and X-Smart Dispensers; Setting Up Communications

Scope:

This procedure assumes familiarity with the Windows XP and Windows 7 operating systems and Fluid Management software parts.

Summary:

ColorPro 4.2.3 and later can be used to control TintMaster and X-Smart dispensers if Fast and Fluid Management (FFM) IDD 2.5.2.461 or later is installed after installing ColorPro. Identical-ingredient machine configurations for both FFM IDD and Fluid Management Americas (FMA) must be installed for proper operation.

For ColorPro 4.3/IDD 2.7.0.13 and later the FMA configuration need not be identical. The configuration is used for access to container size units only.

Summary Procedure:

These steps must be done in order:

1. Install ColorPro SW17xx(F or later). Insert the CD and follow the instructions.
2. Install the FFM IDD SW1720. Insert the CD and follow the instructions.
3. Install an X-Smart16 config. Insert the CD and follow the instructions.
4. Install SW1681 firmware (reference).
5. Install a database part from CD or run ColorPro and create a minimal database.

Details:

These steps must be done in the order shown.

1. Install ColorPro 4.4.0.11 SW1700 series rev. J or later. Insert the ColorPro CD, click Run setup.exe at the prompt (if any), and follow the installation instructions.

NOTE: If you have ColorPro 4.2.2 or earlier installed and you are installing a ColorPro 4 edition upgrade to Professional or Enterprise, update the



Fluid Management®

A Unit of IDEX Corporation

- original edition to 4.4.0.11 or later first and then install the upgrade. Upgrades must be licensed after installation.
2. Install The FFM IDD 2.7.0.13 SW1720 (C) or later. Insert the FFM IDD CD, click Run setup.exe at the prompt (if any), and follow the installation instructions. This will partially overinstall the FMA IDD included in the ColorPro installation.
 3. Install a machine configuration compiled for use with the FFM IDD and ColorPro 4 or later for TintMaster or X-Smart. These configurations install the following:
 - a. a TintMaster or X-Smart configuration for the FFM IDD; this single file has the extension .idd; these files may be created and edited using the ColorProMachineConfig program, SW2439;
 - b. for ColorPro 4.3 and later –
a generic Accutinter configuration, used only for access to container size units;
for ColorPro 4.2.3 and 4.2.4 –
a corresponding Accutinter DVX machine config with positions and ingredients exactly the same as the FFM IDD config, and including ingredient colors and text colors; the machine model is not important except for having the same number of canisters as the FFM dispenser; this allows ColorPro to retrieve ingredient display information not available through the FFM IDD;
 - c. a ColorPro settings file that contains the location of the FFM IDD config file in item a;
 - d. a ColorPro FFM IDD wrapper that allows ColorPro to access the FFM IDD
 - e. a MACHINE.TXT file that allows ColorPro to display the machine part on the About screen;
 - f. A file transfer that places the FMA IDD in simulation mode so that Service.exe can be run without communication errors

Example machine configurations for FFM dispensers are SW2282 Ace TM 300 16 and SW2283 Ace X-Smart 16.

4. Install SW1681(I) or later. This installs firmware files referenced by the database installation below if needed. See the note following step 5.
5. Once these installations are complete, install a ColorPro database, or run ColorPro to create a minimal database that conforms to the machine config to allow spectro and manual dispensing. Configure ColorPro per customer requirements with FM_Customizer.

NOTE: Some databases require additional container sizes. These are installed automatically. The program that adds these container sizes references one of the files installed in step 4.



Fluid Management®

A Unit of IDEX Corporation

Appendix 1 – Calibration:

Calibrate the TintMaster or X-Smart dispenser with Calibration Workshop included in the FFM IDD installation. Contact Fluid Management Engineering for details on calibrating with Calibration Workshop.

Appendix 2 – Troubleshooting - Editing FFM Configurations – ColorPro 4.3 and Later:

If ColorPro 4.3 or later does not display the proper ingredient colors on the manual dispense, adjust or maintenance screens in the correct positions, or the colors display as black/dark grey, ingredient color information may be incorrect or missing from the FFM IDD configuration file.

Changing the FMA IDD configuration with Service will have no effect. Edit the FFM IDD configuration file using ColorProMachineConfig, SW2439.



Fluid Management®

A Unit of IDEX Corporation

Appendix 3 – Troubleshooting - Comparing Installed FFM and FMA Configurations – ColorPro 4.2.3 and 4.2.4 only:

If ColorPro 4.2.3 or 4.2.4 does not display the proper ingredients in the correct positions, or if maintenance functions do not affect the position intended, there may be a mismatch between the FFM and FMA configurations. The FFM configuration is the master config and the FMA config must conform to it.

1. Determine the positions and ingredient names in the FFM configuration by opening the .idd file in C:\Program Files\Fast and Fluid Management\IDD with Notepad. Scroll to the canisters section. Each canister will be listed as follows:

```
[Canister1]
CanisterID=1
MaxLevel=2.25
WarnLevel=0.4
MinLevel=0.2
ComponentID=AXX
ComponentDensity=1
Disabled=0
```

```
[Canister2]
CanisterID=2
MaxLevel=2.25
WarnLevel=0.4
MinLevel=0.2
ComponentID=-1
ComponentDensity=
Disabled=1
```

The CanisterID is the position in the machine.

The ComponentID is the ingredient name.

If a canister is disabled the ComponentID is -1 and Disabled is 1. See Canister2 above.

DO NOT MAKE ANY CHANGES TO THIS FILE. ERRORS WILL OCCUR. FFM configs are created/changed on the FFM web site, or in Calibration Workshop.

2. Check the FMA config with Service in C:\Program Files\Fluid Management\IDDDVX. Navigate to the Setup | Canisters tab and ensure that ingredient names and positions match the FFM config.

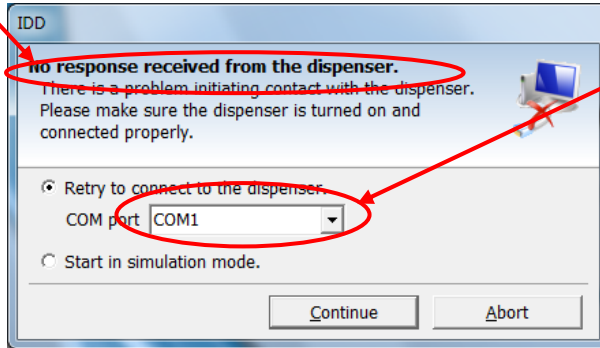
Appendix 4 – Troubleshooting - FFM IDD Communications:



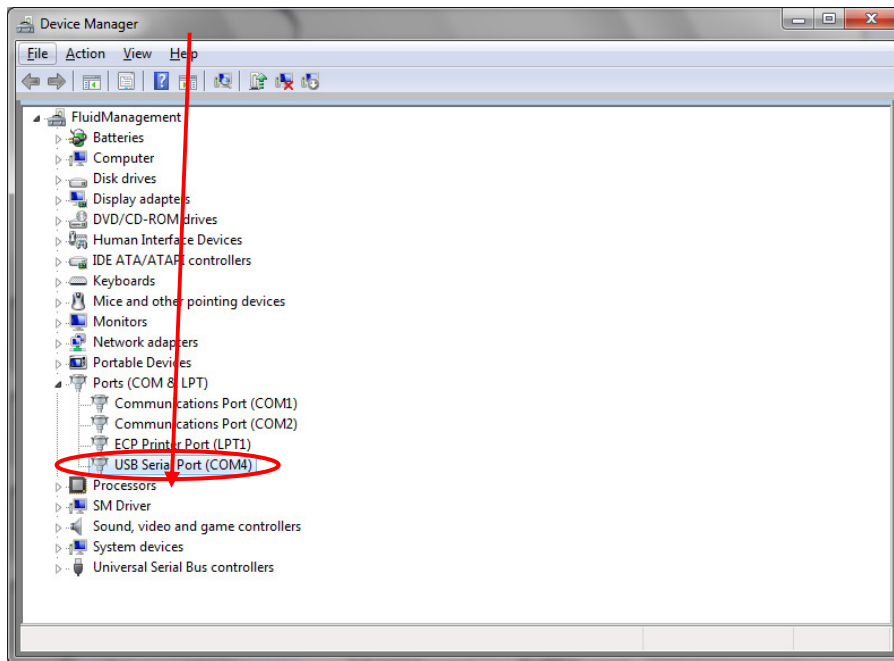
Fluid Management®

A Unit of IDEX Corporation

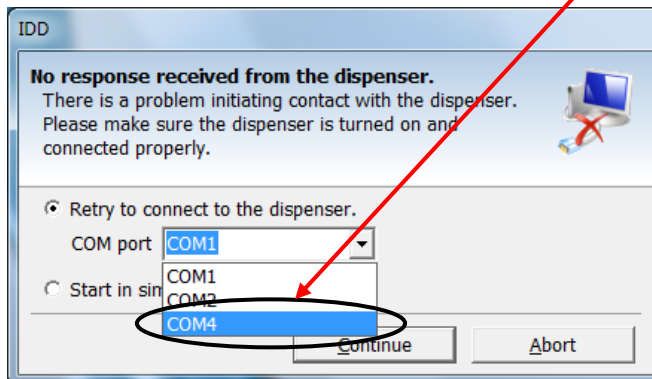
1. If the “No response...” screen appears when ColorPro is started:
 - a. For Tintmasters select the connected physical COM port from the drop-down list.



- b. For X-Smart use the system Device Manager to determine the USB COM port.



Then select the COM port in the drop-down list:

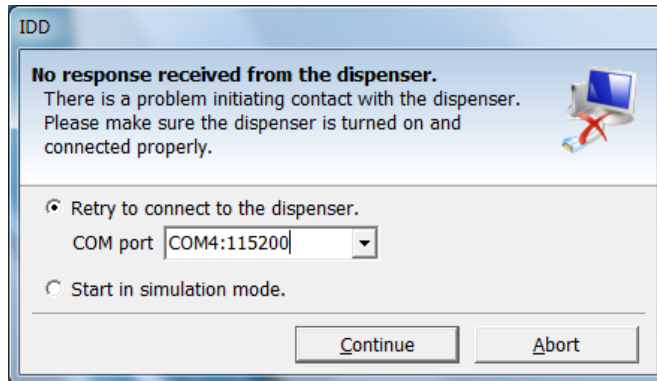




Fluid Management

A Unit of IDEX Corporation

- c. Click “Continue”.
- d. If the “No response...” screen appears again, enter “:115200” after the port number, no quotes, no spaces, and click Continue.



2. The ColorPro main screen will display.